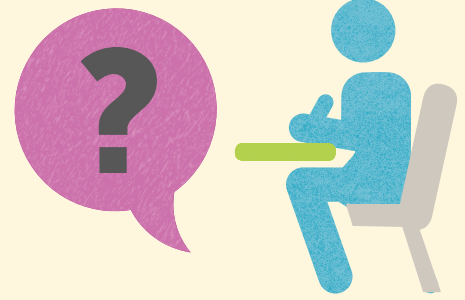




Questions to ask the person carrying out your social care needs assessment



When will I get a copy of my assessment?

When will you tell me if I'm eligible for support?

What happens after that?

When will you assess my finances and tell me if/how much I have to pay?

What do I do if my needs change in the meantime?

How often will my needs be re-assessed?

How do I get in contact with you if I need to?

(ask for their name, job title and contact details)

Who can I contact if I have any other questions?

Note down here any other questions you might want to ask.